

ABOUT US

Chatket Co.Ltd an Importer, Stockist & Supplier of Steel Pipes & Tubes, Sheets, Plates & Coils, Round Bars, Flanges, Butt-weld Fitting, Gaskets & Fasteners. We supplies material grade depends on customer requirement from Carbon steel, stainless steel, duplex , super duplex & nickle based alloys. Besides we supply all type of valves such as ball valve, globe valve, gate valve, check valve, butterfly valve, in all material grade.

Most importantly we believe in Customers satisfaction with superior quality service. Because in an industry with loads of experience, we thrive to deliver quality material with prompt and timely delivery. Hence, working as per customers gives us immense pleasure & as a result we work more harder.

We are well known in industries such as Textile, Refineries, Shipping, Oil & Gas, Petrochemical, major EPC Contractors, Project owners etc. Our motto is to provide our Customers with the best quality products at the most economical prices.

We are backed by world renowned stockiest around the world and the excellent relationships with all major ISO9001 approved manufacturers world-wide. We offer brands based on customer specification and customer approved manufacturer list.

We have excellent logistics network to deliver the product to customer on timely delivery. We understand the importance of timely delivery and value the commitments.

If any query, feel free to Contact Us. We are always available for the customers. We aim to work for customers and to provide them according to their requirements.

PRODUCTS

PIPES & TUBES

SIZES ~ 1/8" TO 40" : SCHEDULE ~ 10 TO XXS : TYPE~ SMLS WELDED FORGED

STANDARD ~ ANSI, ASME, ASTM, BS, DIN, JIS

CARBON STEEL PIPES & TUBES

CARBON STEEL ASTM A 106 GR.B

CARBON STEEL ASTM A 53 GR. B

CARBON STEEL API 5L GR. B

CARBON STEEL IS 1978 YST 210

CARBON STEEL IS 1978 YST 240

DUPLEX, SUPER DUPLEX STEEL PIPES & TUBES

DUPLEX STEEL PIPES & TUBES UNS S31803

DUPLEX STEEL PIPES & TUBES UNS S32205

SUPER DUPLEX STEEL PIPES & TUBES UNS S32750

SUPER DUPLEX STEEL PIPES & TUBES UNS S32760

STAINLESS STEEL PIPES & TUBES

SS 304/304L PIPES & TUBES

SS 316/316L/316TI PIPES & TUBES

SS 309/310 PIPES & TUBES

SS 317/317L PIPES & TUBES

SS 321 PIPES & TUBES

SS 904L PIPES & TUBES

CU-NI, HASTELLOY, ALLOY PIPES & TUBES

COPPER NICKEL PIPES & TUBES CU NI-70/30

COPPER NICKEL PIPES & TUBES CU NI 90/10

HASTELLOY PIPES & TUBES 276, C-22,B-2

ALLOY 20 PIPES GRADE P1,P5,P9,P11,P23,P91

ALLOY STEEL PIPES & TUBES GRADE P1, P5, P12

INCOLOY 800 , 800H ,800 HT



PRODUCTS

BUTTWELD FITTINGS

SIZES ~ 1/8" TO 40" : SCHEDULE ~ 10 TO XXS : TYPE~ SMLS WELDED FORGED

STANDARD ~ ANSI, ASME, ASTM, BS, DIN, JIS

PRODUCT: ELBOW, TEE, REDUCER, COUPLINGS, STUB ENDS, SWAGE NIPPLE, CAPS ETC.

CARBON STEEL BUTTWELD FITTINGS

CARBON STEEL BUTTWELD FITTINGS ASTM A105

CARBON STEEL BUTTWELD FITTINGS ASTM A182

CARBON STEEL BUTTWELD FITTINGS ASTM A351

STAINLESS STEEL BUTTWELD FITTINGS

SS 304/304L BUTTWELD FITTINGS

SS 316/316L/316TI BUTTWELD FITTINGS

SS 309/310 BUTTWELD FITTINGS

SS 317/317L BUTTWELD FITTINGS

SS 321 BUTTWELD FITTINGS

SS 904L BUTTWELD FITTINGS

DUPLEX, SUPER DUPLEX STEEL BUTTWELD FITTINGS

DUPLEX STEEL BUTTWELD FITTINGS UNS S31803

DUPLEX STEEL BUTTWELD FITTINGS UNS S32205

SUPER DUPLEX BUTTWELD FITTINGS UNS S32750

SUPER DUPLEX BUTTWELD FITTINGS UNS 327600

CU-NI, HASTELLOY, ALLOY BUTTWELD FITTINGS

COPPER NICKEL 70/30 BUTTWELD FITTINGS

COPPER NICKEL 90/10 BUTTWELD FITTINGS

ALLOY STEEL GR P 1, P5, P9 BUTTWELD FITTINGS

INCONEL 600,625,718 BUTTWELD FITTINGS

MONEL 400, 500 BUTTWELD FITTINGS



PRODUCTS

FLANGES

SIZES ~ 1/8" TO 40": FLANGE ~ RF, FF, RTJ, TONGUE & GROOVE: SCHEDULE ~ 10 TO XXS

TYPE~ WN, SW, SO, THR, LAP JOINT, BLIND, ORIFICE: CLASS #150 to #10000 PSI, PN 10 - PN 400

STANDARD ~ ANSI, ASME, ASTM, BS, DIN, JIS

CARBON STEEL FLANGES

CARBON STEEL FLANGES ASTM A105

CARBON STEEL FLANGES ANSI B16.5

CARBON STEEL FLANGES A234 GR.WPB 52.0

DUPLEX, SUPER DUPLEX FLANGES

DUPLEX STEEL FLANGES UNS S31803

DUPLEX STEEL FLANGES UNS S32205

SUPER DUPLEX FLANGES UNS S32750

SUPER DUPLEX FLANGES UNS 327600

STAINLESS STEEL FLANGES

SS 304/304L FLANGES

SS 316/316L/316TI FLANGES

SS 309/310 FLANGES

SS 317/317L FLANGES

SS 321 FLANGES

SS 904L FLANGES

CU-NI, HASTELLOY, ALLOY FLANGES

COPPER NICKEL FLANGES

COPPER NICKEL FLANGES

ALLOY STEEL FLANGES

INCONEL FLANGES

MONEL FLANGES



PRODUCTS

FORGED FITTINGS

PRODUCT: ELBOW, TEE, CROSS, COUPLING, CAP, BOSS, UNION, PLUG, NIPPLE, WELDOLET, SOCKOLET, SWAGE NIPPLE.

RATING: 3000, 6000, 9000 PSI. TYPE: THREAD, SOCKET WELD.

SIZE: 1/4" TO 4"

CARBON STEEL FORGED FITTINGS

CARBON STEEL FORGED FITTINGS ASTM A105

CARBON STEEL FORGED FITTINGS ANSI B16.5

CARBON STEEL FORGED FITTINGS A 234 GR.WPB

DUPLEX, SUPER DUPLEX FORGED FITTINGS

DUPLEX STEEL FORGED FITTINGS UNS S31803

DUPLEX STEEL FORGED FITTINGS UNS S32205

SUPER DUPLEX FORGED FITTINGS UNS S32750

SUPER DUPLEX FORGED FITTINGS UNS 327600

STAINLESS STEEL FORGED FITTINGS

SS 304/304L FORGED FITTINGS

SS 316/316L/316TI FORGED FITTINGS

SS 309/310 FORGED FITTINGS

SS 317/317L FORGED FITTINGS

SS 321 FORGED FITTINGS

SS 904L FORGED FITTINGS

CU-NI, HASTELLOY, ALLOY FORGED FITTINGS

COPPER NICKEL FORGED FITTINGS

COPPER NICKEL FORGED FITTINGS

ALLOY STEEL FORGED FITTINGS

INCONEL FORGED FITTINGS

MONEL FORGED FITTINGS



PRODUCTS

VALVES

CONNECTION TYPE: SCREWED ENDS, SOCKET WELD ENDS, FLANGED ENDS, BUTT WELD ENDS, SOCKETTED ENDS, WAFER TYPE ENDS

MATERIAL: CAST IRON, BRONZE, GUN METAL, CARBON STEEL, STAINLESS STEEL, ALLOY CARBON STEEL, PVC, SPECIAL ALLOY

STANDARD ~ API, ASME, BS, DIN, JIS **SIZES ~** 1/8" TO 40" **CLASS #**150 TO #10000 PSI, PN 10 - PN 400



BALL VALVE



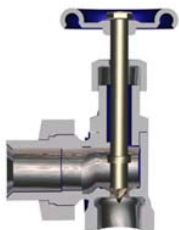
GATE VALVE



GLOBE VALVE



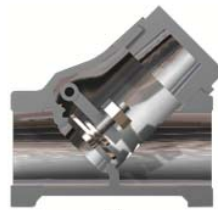
BUTTERFLY VALVE



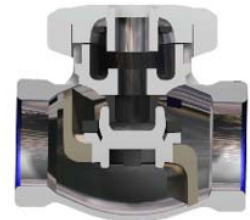
NEEDLE VALVE



PLUG VALVE



SWING CHECK VALVE



LIFT CHECK VALVE

WE ALSO SUPPLY SPECIAL VALVES:

MULTI-PORT VALVE, FLUSH BOTTOM VALVE, FLOAT VALVE, FOOT VALVE, LINE BLIND VALVE, PRESSURE / VACUUM RELIEF VALVE, QUICK EXHAUST VALVE, INSTRUMENT VALVE ETC.

OTHER PRODUCTS

FASTENERS

TYPE OF FASTENERS

STUDBOLTS, HEXAGONAL HEAD BOLTS, U-BOLTS,
J-BOLTS, L-BOLTS,

BOLT & NUT MATERIAL

ASTM A193 / A320 B5 B6 B7 B7M L7 L7M B8 B8M

A307 A325 A490

SS304 (A2) SS304L SS310 SS316 (A4) SS321

MONEL, INCONEL, HASTELLOY, A453-660, SUPER
DUPLEX

COATING

ELECTRO-ZINC PLATING

PTFE / Xylan

HOT DIP GALVANIZING



GASKETS

SIZES ~ 1/8" TO 60":

CLASS #150 to #10000 PSI, PN 10 - PN 400

STANDARD ~ ANSI, ASME, ASTM, BS, DIN, JIS

TYPE OF GASKETS

SPIRAL WOUND GASKET

RING TYPE JOINTS

FLANGE INSULATION SETS

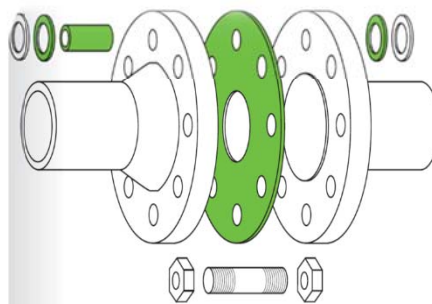
KAMMPROFILES

COMPRESSION PACKING

CUT & SHEET GASKETS

NON-METALLIC GASKETS

MATERIAL: AS PER CUSTOMER REQUIREMENT



OTHER PRODUCTS

EXPANSION JOINT / EXPANSION BELLOWS

TYPES:

SIMPLE EXPANSION JOINT

HINGED EXPANSION JOINT

UNIVERSAL EXPANSION JOINT

GIMBAL EXPANSION JOINT

PRESSURE BALANCED EXPANSION JOINT

MATERIAL:

METAL EXPANSION JOINT

RUBBER EXPANSION JOINT



STRAINER & STEAM TRAP

TYPES

Y-STRAINER: THREADED, SW TYPE

T-STRAINER: THREADED, SW TYPE

STEAM TRAP: BALL FLOAT TYPE

STEAM TRAP: INVERTED BUCKET TYPE

MATERIAL: CARBON STEEL/STAINLESS/DUPLEX

STRAINER
STEAM TRAP



STEEL STRUCTURE

PLATES / BEAMS/CHANNEL/ANGLE/ROUND BAR

STANDARD:

ASTM/ASME & DIN STANDARD PLATES

TEST CERTIFICATE: 3.1 /3.2 DNV, ABS, LLR OR ANY
OTHER CLASSIFICATION SOCIETY APPORVED.

CARBON STEEL:

A36, A572 GR 50, A588,

A516 GR 70, A514 T-1

CARBON ALLOY:

CHROME ALLOY 4130, 4140, 4340

ABRASION RESISTANT:

AR400, AR500

STAINLESS STEEL

STAINLESS STEEL - TYPE 304

STAINLESS STEEL - TYPE 316

STAINLESS STEEL - TYPE 321

ALLOY PALTE

ALLOY 20 PLATE

INCONEL 330 PLATE

INCOLOY 825 PLATE

MONEL 400 PLATE

NICKEL 200 PLATE

TITANIUM PLATES



ELECTRICAL

ELECTRICAL CABLES & ACCESSORIES

CABLES

POWER CABLES
CONTROL CABLES
INSTRUMENT CABLES

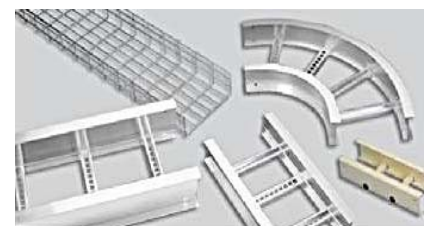
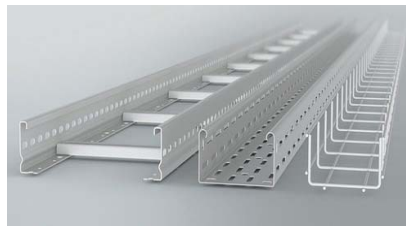
CABLES GLANDS

WEATHER PROOF
EXPLOSION PROOF



CABLE TRAY & LADDERS

STAINLESS STEEL
HOT DIP GALVANISED
ALUMINIUM
FIBRE GLASS



JUNCTION BOXES

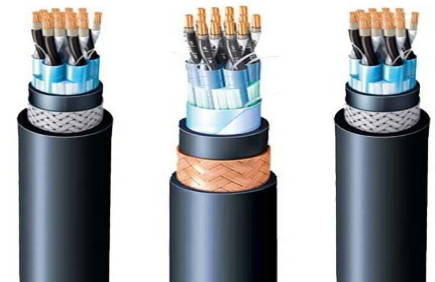
INDUSTRIAL WEATHER PROOF
EXPLOSION PROOF

CABLE TIES & ACCESSORIES

WIRING DEVICES

CONDUIT FITTINGS

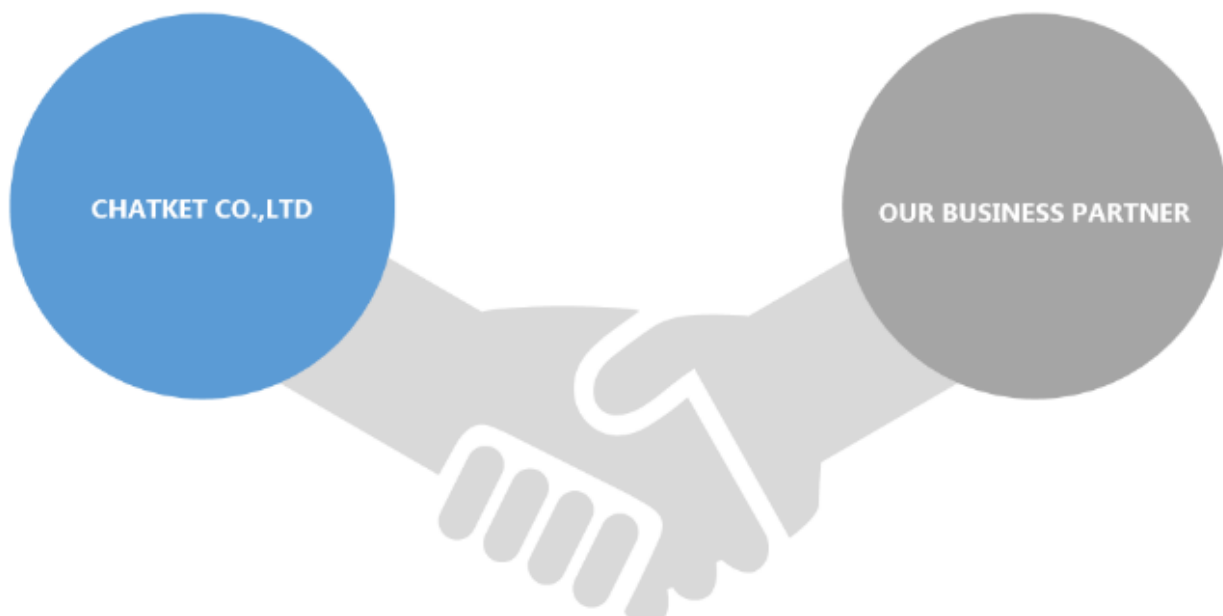
UNISTRUCT & ACCESSORIES



CHATKET CO.,LTD

SUPPLY SOLUTION PROVIDER

**WE THANK YOU IN ADVANCE FOR YOUR BUSINESS OPPORTUNITY TO SERVE YOU.
WE GREATLY VALUE YOUR BUSINESSs**



CONTACT US

**61/9 MOO 9 THEPHARAK ROAD, BANG PHLI YAI, BANG PHLI
DISTRICT, SAMUTPHAKAN PROVINCE 10540**

TEL. +66971360510 FAX. +662 3122307

EMAIL: SALES@CHATKET.COM